



# TEREX

# 1804 MI

## Material Handler

<b>OPERATING WEIGHT</b>	76,900 - 77,600 lbs (34,900 - 35,200 kg)
<b>NET ENGINE POWER</b>	228 hp (170 kW)
<b>MAX REACH</b>	54' 4" (16.5 m)



# MATERIAL HANDLER 1804 MI

### Specifications

Engine	
Manufacturer / Model	Deutz / BF6M 1013 ECP
Type	Turbocharger / intercooler
Engine output (acc. to ISO 1585)	228 hp (171 kW)
Displacement	436 in <sup>3</sup> (7.14 L)
Maximum rpm	1900 min <sup>-1</sup>

Noise Level	
Outside cab (LwA)	104 dBA
Inside cab (LpA)	75 dBA
Noise level well below EU limits	

Brakes	
<b>Service brake:</b>	Twin-circuit system, multi-disc type
<b>Parking brake:</b>	Spring loaded type

Hydraulic System	
Computer controlled AWE4 system with one load limit controlled high performance piston pump and fuel saving oil supply on demand in order to ensure sensitive, proportional and load independent control of all movements. Primary and secondary safeguarding of the hydraulic system against overload. Anti-cavitation valves for all working functions throttle control in the lifting and folding circuit.	
Hydraulic system	2 x axial piston pump
Main pump	HPR 42/42
Maximum gear pump output	2 x 85 gpm (322 L/min)
Max. operating pressure	4,614/5,551 psi (320/380 bar)

## Specifications

Electrical System	
Operating voltage	24 Volt
Cold-start high performance batteries	2 x 143 Ah

Cab	
Shock absorbing resilient mountings • Heat insulated panoramic windows for best all around visibility • No glare interior • Skylight with window • Air conditioning • Ergonomic control levers • Adjustable steering column • Forward and reverse seat adjustment, independent of the control panel • Up and over windscreen lockable under roof panel	

Fluid Capacities	
Fuel tank	112 gal (423.9 L)
Hydraulic tank	133 gal (503.4 L)
Engine oil tank	6 gal (22.7 L)

Swing Mechanism	
<b>Swing mechanism with dual-drive</b>	
Swing motor	Axial piston with priority valve
Swing gear box	Planetary gearing
Swing brake*	Lockable multi-disc
<b>Drive internally toothed</b>	
Swing speed	8.5 min <sup>-1</sup>
Swing torque	68,700 lb•ft (93.4 kNm)

\*Straight forward swing operations while on grades due to foot locking pedal brake, if swing pressure exceeds 1,740 psi (120 bar).

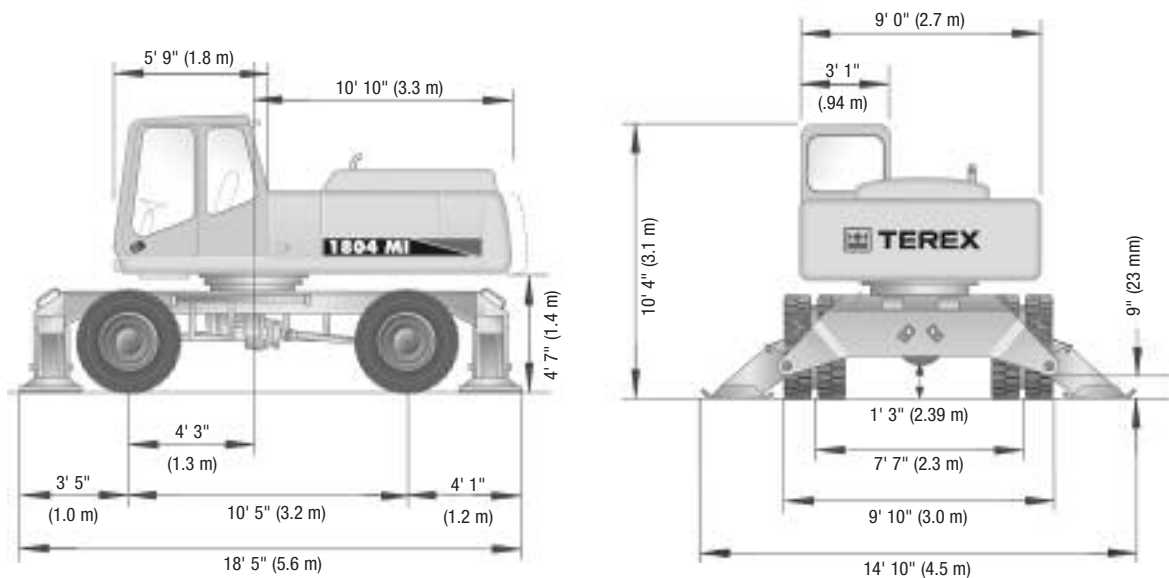
Undercarriage	
70 ton (154,323 lbs) special excavator axles with planetary gears in all four wheel hubs	
All wheel drive	
Variable speed motor and accelerator pedal control	
Double acting travel brake valve	
Select driving direction via push button on the right hand joy-stick	
Steering axle with automatic blocking of the pendulum axle	
Steering via potentiometer (no steering wheel) and joy-sticks with push button (for off-road driving)	

Traveling Speed	
Off-road low	0 - 1 mph (0 - 1.61 km/h)
Off-road (high)	0 - 3 mph (0 - 4.83 km/h)
On-road (high)	0 - 12 mph (0 - 19.31 km/h)

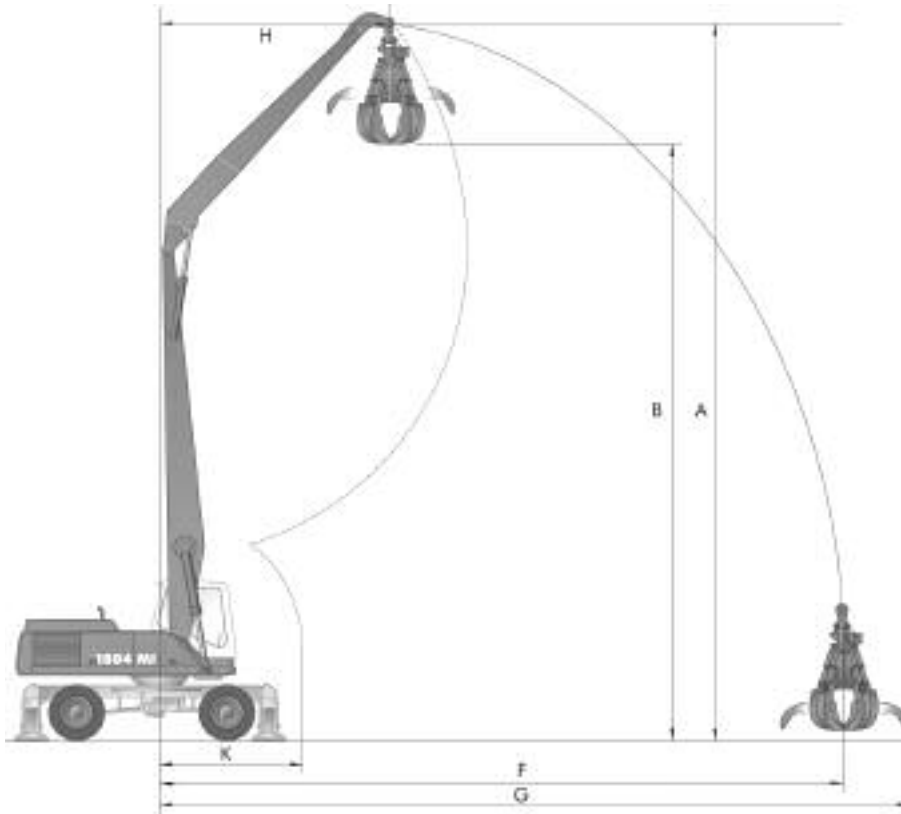
Tires	
8-ply, solid elastic	12.00 - 20
Turning radius	27 ft (8.23 m)

Operating Weight	
Basic machine includes work attachment, 5 tine grapple	
3,630 lbs (1,646 kg)	
Reach 47' (14.3 m)	76,900 lbs (34,900 kg)
Reach 50' 11" (15.5 m)	77,300 lbs (35,100 kg)
Reach 54' 4" (16.5 m)	77,600 lbs (35,200 kg)

## Dimensions



**Working Ranges**



<b>Total Reach: 47' (14.3 m)</b> <b>Boom 28' 7" (8.7 m), Stick 22' 8" (6.9 m)</b>	
Equipped with grapple	
A Jib height	51' 0" (15.5 m)
B Dumping height	42' 6" (13.0 m)
F Max. length of jib	48' 7" (14.8 m)
G Max. outreach	52' 2" (15.9 m)
H Max. outreach length	16' 11" (5.2 m)
K Min. length of jib	11' 2" (3.4 m)

<b>Total Reach: 50' 11" (15.5 m)</b> <b>Boom 31' (9.4 m), Stick 25' 5" (7.7 m)</b>	
Equipped with grapple	
A Jib height	53' 10" (16.4 m)
B Dumping height	44' 11" (13.7 m)
F Max. outreach	50' 11" (15.5 m)
G Max. length of jib	56' 1" (17.1 m)
H Max. outreach length	19' 8" (6 m)
K Min. length of jib	9' 2" (2.8 m)

<b>Total Reach: 54' 4" (16.6 m)</b> <b>Boom 34' 9" (10.6 m), Stick 25' 5" (7.7 m)</b>	
Equipped with grapple	
A Jib height	57' 5" (17.5 m)
B Dumping height	48' 7" (14.8 m)
F Max. length of jib	55' 9" (17.0 m)
G Max. outreach	59' 9" (18.2 m)
H Max. outreach length	20' 10" (6.4 m)
K Min. length of jib.	12' 4" (3.8 m)

**Standard Equipment**

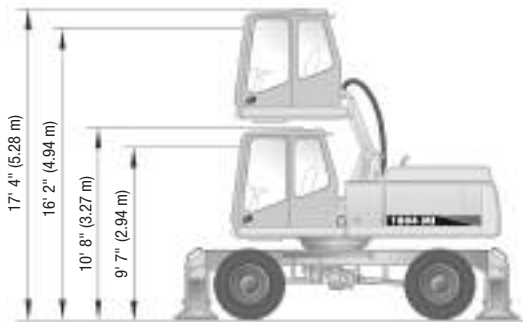
Hydraulic installation for grab operation and grab rotation
Fuel tank indicator
Battery main switch in the negative wire
Skylight with window
Air conditioned cab with storage area
Comfort seat with arm rests and lumbar support
Tool-box in the superstructure
Sealed base boom pivot pins
Emergency boom lowering accumulator
Windscreen washer

Sliding window in the cab door
Intermediate rings between the tire pairs
Travelling with foot pedals
Infinitely adjustable steering column (height and tilt)
4 hydraulic stabilizers
Hydraulic cab lift 6' 7" (2 m)
2 spot lights mounted on cab
AM / FM cassette stereo
Automatic central lube
Solid 12.00-20 tires

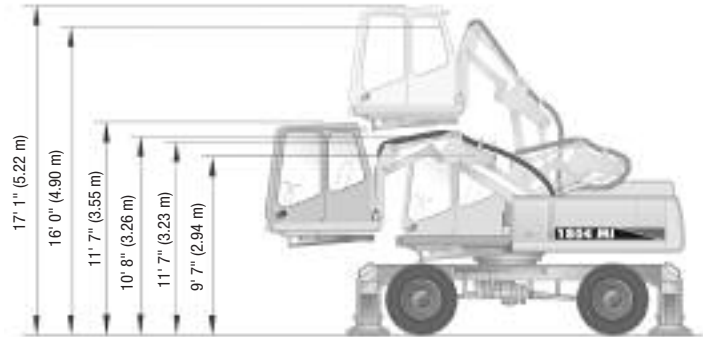
# Material Handler 1804 MI

## Cab Design

Hydraulic cab lift



Hydraulic cab lift horizontal / vertical



## Loading Dimensions

### Reach 47' (14.3 m) Boom System

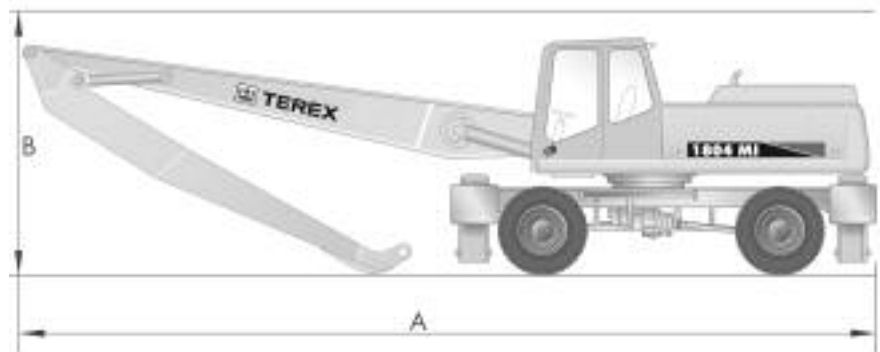
Length A 41' 6" (12.65 m)  
Height B 10' 8" (3.25 m)

### Reach 50' 11" (15.52 m) Boom System

Length A 43' 11" (13.38 m)  
Height B 10' 8" (3.25 m)

### Reach 54' 4" (16.5 m) Boom System

Length A 47' 5" (14.5 m)  
Height B 10' 8" (3.25 m)



## Attachments

			Capacity	Weight
Grapples	4 tine	Open	.98 yd <sup>3</sup> (799 L)	3,125 lbs (1,417 kg)
	5 tine	Open	.98 yd <sup>3</sup> (799 L)	3,630 lbs (1,646 kg)
	5 tine	Half-Open	.98 yd <sup>3</sup> (799 L)	4,070 lbs (1,846 kg)

Quick-Attach connection available.

Contact your local TEREX Material Handling distributor for more attachment options.



For more information, product demonstration, or details on purchase, lease and rental plans, please contact your local TEREX Material Handling Distributor.

### TEREX Construction Americas

8800 Rostin Road  
Southaven, MS 38671  
USA

TEL 662-393-1800  
SALES 866-837-3923  
PARTS & TECH SUPPORT 888-201-6008  
FAX 662-393-1700  
EMAIL sales@terexca.com  
WEB terexca.com

Effective date: January 1, 2005. For further information, please contact your local distributor or the TEREX sales office listed. Product specifications are subject to change without notice or obligation. The photographs and drawings in this brochure are for illustrative purposes only. Refer to the appropriate Operator's Manual for instructions on the proper use of this equipment. Failure to follow the appropriate Operator's Manual when using our equipment or to otherwise act irresponsibly may result in serious injury or death. Prices and specifications subject to change without notice. The only warranty applicable is the standard written warranty applicable to the particular product and sale. TEREX makes no other warranty, expressed or implied. Products and services listed may be trademarks, service marks or trade-names of TEREX Corporation and/or its subsidiaries in the USA and other countries and all rights are reserved. "TEREX" is a Registered Trademark of TEREX Corporation in the USA and many other countries. Copyright ©2005 TEREX Corporation